

1956 Spartan Imperial Mansion Renovation Plan and Details on Materials and Finishes

Existing Details:

- 1) It Has the original running gear with the exception of four brand new tires and rims.
- 2) Axles and Springs. It has new steel axles with leaf spring suspension.
- 3) The steel A frame had some rust in the bottom channel of the C but was repaired with an additional steel frame welded over the existing frame. The steel A frame was painted to protect the steel from rusting.
- 4) Dry weight. 8600#
- 5) Hitch Ball Height. Approximately 20 inches
- 6) Safety chains. No.
- 7) Hitch weight. Approx: 1032#
- 8) Hitch ball size 2 5/16 inch. New [Bulldog Collor-Lok A-Frame Coupler \(Ball Size: 2-5/16-Inch, Capacity: 12500-Pound\)](#)
- 9) Hubcaps. No.
- 10) Spare tire. No.
- 11) Tire condition. It has four 7:50 x 16LT 10 ply tires mounted on new non-split rims with six lugs on 5 1/2 inch bolt circle. These were replaced in 2021.

Demo Notes: Gut to steel framing and shell. Save all cabinets and doors.

- 12) Tub – Remove and save for re-install.
- 13) Remove toilet and discard.
- 14) There are a few closet doors that are delaminating at the bottom. Check out and see how bad.
- 15) Remove all cabinet and closet doors and save. Remove all hardware and hinges and save one of each and discard remainder.
- 16) Remove all drawers and save. Remove hardware and save.
- 17) Remove range and discard.
- 18) Remove kitchen countertops and red backsplash and discard. Discard faucet and sink.
- 19) Demo all electrical outlets and fixtures.
- 20) Remove all light fixtures and discard.
- 21) Remove all vinyl flooring layers and all sub floor.
- 22) Remove windows. Cut out aluminum stop to prep for new window install.
- 23) Remove curved plexi-glass windows and plate glass center panel and discard.

Exterior Renovation Details:

- 1) Windows: The original aluminum windows were removed.
 - a. Installed new Motion 1800 Series Aluminum double hung and fixed windows. Exterior finish metallic painted aluminum. Mitered corners. Clear glass.
 - b. Replaced glass in one of the upper vent windows near the front door. It had a crack in the glass.
 - c. One window in the rear bedroom does not currently open. It has brackets on the outside holding it shut.
- 2) Frame and A-frame: Rusty A frame and hitch. Repaired with new steel A frame, hitch, and jack.
- 3) Roof and Vents: Clean roof. Modify roof penetrations to accommodate new roof top AC units (with heat strips). Seal all seams with
- 4) Exterior lights. Replaced all four of the original beehive type marker lights with new.
- 5) Installed new exterior tail lights.
- 6) It has the original license plate light and bracket.
- 7) Underbelly. It has the original underbelly, which is in decent condition. There are a few small holes in the front section of the underbelly and some larger holes in the rear underbelly that were plugged with spray foam.
- 8) Insulation: The walls were filled with 2" of closed cell spray foam insulation. The ceilings and floors were filled with 4-5" of closed cell spray foam insulation,
- 9) Entry door front: It has the original aluminum entry door. The door has some minor damage at the bottom. It has new door hardware. This door has a new weather strip.

- 10) Screen door. The front and rear has the original screen doors, which are in decent condition. The front door is missing one of the screen sliders.
- 11) Rear door: It has the original aluminum entry door, which is in good condition. It has new door hardware. This door has a new weather strip.
- 12) Steps: It has the original steps at front and rear door. Both of them do slide in and out however the front door-step had a crack in the metal. The front door step was cracked but had a new plate welded to it. Both steps were painted to protect against rust.
- 13) Front hoist: It has a new front hoist. Bulldog 12,000 lbs. Square Trailer Jack Sidewind 12.5" Lift Drop Leg w/ Crank Non Spring Return.
- 14) Hitch coupler: It has a new steel hitch coupler. Bulldog Collor-Lok A-Frame Coupler (Ball Size: 2-5/16-Inch, Capacity: 12500-Pound).
- 15) Exterior Shell Condition: Dents, scratches, and damage. There are no major dents on this trailer. There are a few minor scrapes and dings as evident in photos.
- 16) Exterior Shell: The exterior of this trailer is mostly original and mostly intact. This Spartan is built like an airplane with riveted construction for long life and durability. It has aircraft grade aluminum that has been polished to a mirror like shine.
- 17) Roof: The roof was sanded smooth. The seams were sealed with Dicor's Coating Ready Cover Tape, a fleeced backed sealing tape for use on metal RV roof seams prior to coating. Two coats of Rust-Oleum 710 Elastomeric Metal Roof Coating were applied. This coating protects and beautifies metal aluminum and steel RV roofs. The Elastomeric resins expand and contract with the roof movement.

Mechanical Plan

1) Heating & Cooling

- a. Added Two roof top HVAC AC and heat heads on roof. Coleman 13500 BTU RV Air Conditioner Top Unit Only, White. Coleman Mach 9430D7153 Deluxe ChillGrille Heat-Ready Non-Ducted Ceiling Assembly. Top Unit Only Coleman 13500 BTU RV Camper Air Conditioner Top Unit, White. Coleman 9233A4551 Electric Heat Kit for Heat Ready Ceiling Assemblies
- b. Electric wall bath heater - Bath fan heater: Global Industries - Shallow Wall/Ceiling Fan Forced Heater SED1012C, 120V, 1000W, Stainless Steel
- c. 3' Electric baseboard heat in bedrooms. Thermostats on units.

2) Electrical: Completely rewired. New 100 amp panel was installed.

- a. Brakes. Yes, it has electric brakes on both axles, which are in working condition. Breakaway switch. Yes, it has a brand new Tekonsha brand breakaway kit, which is wired up and in working condition.
- b. Plug for exterior lights. Yes, it has a brand new seven way plug like most current RVs use.
- c. New Light fixtures
 - A. BR1 Ceiling: Oso 17 3/4" High Opal Glass Brushed Nickel Sconce (two maximum 60 watt candelabra base bulbs)
 - B. living room ceiling: Oso 17 3/4" High Opal Glass Brushed Nickel Sconce (two maximum 60 watt candelabra base bulbs)
 - C. at dining room table: New ceiling hung bubble lamp. Size 8" H x 18" W x 18" D (Bulb Base E26/Medium (Standard) Maximum Wattage (per bulb) 60 Watt
 - D. at mudroom at Havana Wall Sconce by Jonathan Adler from Robert Abbey (Max Wattage: 60 watts/socket - Socket Type: Medium Base (E26) Dimmable LED Bulb G16.5 Medium Base 5.5W 2700K Frosted White 40 Watt Equivalent UL
 - E. at kitchen ceiling: Brushed Nickel 20 1/4"W CFL Ceiling Light with Opaque Shade – Bulbs included.
 - F. at kitchen undercabinet – Strip LED low voltage. Transformer located under electric panel.
 - G. at bath ceiling - Modern Wall Sconce – Brushed Nickel - Wall Light - Mid Century - Modern - Industrial - Bathroom Vanity - UL Listed [ANSONIA] (Max Wattage: 60 watts/socket - Socket Type: Medium Base (E26) Dimmable LED Bulb G16.5 Medium Base 5.5W 2700K Frosted White 40 Watt Equivalent UL

- H. Bath fan heater: Global Industries - Shallow Wall/Ceiling Fan Forced Heater SED1012C, 120V, 1000W, Stainless Steel
- I. at BR2 mirror Havana Wall Sconce by [Jonathan Adler](#) from [Robert Abbey](#) (Max Wattage: 60 watts/socket - Socket Type: Medium Base (E26) Dimmable LED Bulb G16.5 Medium Base 5.5W 2700K Frosted White 40 Watt Equivalent UL
- J. at BR2 ceiling: Oso 17 3/4" High Opal Glass Brushed Nickel Sconce (two maximum 60 watt candelabra base bulbs)
- K. at BR2 makeup stand Modern Wall Sconce - Brushed Nickel - Wall Light - Mid Century - Modern - Industrial - Bathroom Vanity - UL Listed [ANSONIA] (Max Wattage: 60 watts/socket - Socket Type: Medium Base (E26) Dimmable LED Bulb G16.5 Medium Base 5.5W 2700K Frosted White 40 Watt Equivalent UL
- L. at porch: New wall sconce at exterior. Crittenden 9" Tall Outdoor Wall Sconce – Ordered



Bedrooms and Living Room Ceiling Lights Link: https://www.lampsplus.com/products/oso-17-and-three-quarter-inch-high-opal-glass-brushed-nickel-sconce_15d56.html

Dining Room Light Link: <https://www.wayfair.com/Legion-Furniture--1Light-Unique-Geometric-Pendant-LM10904-L6087-K~LEG2033.html?piid=14094602>

Mudroom and BR2 Mirror: https://www.etsy.com/listing/497429710/gold-vanity-light-modern-wall-sconce-mid?ref=shop_home_active_179&frs=1&variation0=1387864338

Bulbs: <https://www.etsy.com/listing/462171786/dimmable-led-bulb-g165-medium-base-55w>

Kitchen Ceiling Light: https://www.lampsplus.com/products/diamonds-giclee-nickel-20-and-one-quarter-inch-wide-ceiling-light_27m91.html Bulbs: 60W Equivalent Maxlite 10W LED 2700K GU24 A19 Bulb Style # 41N89

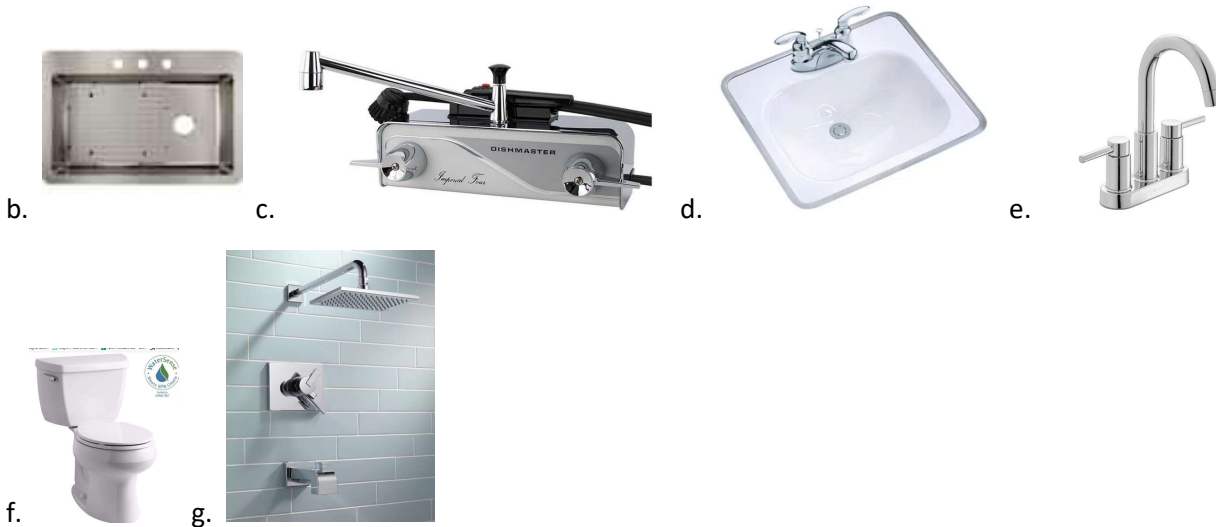
Bath Fan / Heater: <https://www.globalindustrial.com/p/hvac/heaters/electric-wall/berko-shallow-wallceiling-fan-forced-zonal-heater-sed1012c-120v-1000-watts-83-amps-chrome#no-back>

Under Cabinet Lights:

Bathroom Ceiling and Makeup Stand BR2: <https://www.etsy.com/listing/497434260/modern-wall-sconce-mint-green-sconce?gpla=1&gao=1&variation0=927504042>

Outdoor Patio Light: <https://vintagetrailersupply.com/1950s-airstream-porch-light-vts-948/> - Ordered Feb 2021 by Loren

- 3) **Plumbing:** All waste lines have been tested. It has the original copper and brass drains. New PEX supply lines have been run inside cabinets to supply hot water heater, kitchen sink, bath sink, and shower. Installed gas/electric hot water heater under bench.
- Tub – Keep. 28 inch x 42 inch original tub. The porcelain appears to be in pretty good shape but there is silicon around the drain.
 - Kitchen sink: Elkay Avenue Drop-in/Undermount Stainless Steel 33 in. Single Bowl Kitchen Sink with Bottom Grid
 - New kitchen sink faucet. Dishmaster Dishmaster M76 Imperial Four, Chrome Standard faucet, Gold starburst face plate, standard hose, only sink countertop hardware.
 - Bath Sink: Tahoe Drop-In Cast Iron Bathroom Sink in White with Overflow Drain by KOHLER. With metal sink ring.
 - Bathroom faucet: Dorind 4 in. Centerset 2-Handle High-Arc Bathroom Faucet in Chrome
 - Toilet: 12" RI. Short bowl. Wellworth Classic Complete Solution 2-Piece 1.28 GPF Single Flush Round Toilet in White, Seat Included
 - New bathroom showerhead and valve. Delta T17453 Vero Volume Control Tub and Shower Faucet Trim with Lever Handles and Monitor
 - Water heater. [Suburban 12 Gallon Water Heater DSI & 110V SW12DE 5247A 5147A 5147F](#)
 - [Suburban Water Heater On/Off Switch - Suburban - Cream 232795, 620007, 234795](#)
 - [Suburban RV Water Heater Door - Flush Mount - 10, 12 & 16 gallon - White 6259APW - 10 & 12 gallon](#)
 - Freshwater tank. No. Sewer holding tank. No. Waste holding tank. No. Water intake valve. On site.



Kitchen Sink:

Kitchen Sink Faucet Link: <https://dishmasterfaucet.com/collections/dishmaster-faucet-chrome/products/dishmaster-faucet-m76-imperial-four-chrome>

Bath Sink: <https://www.homedepot.com/p/KOHLER-Tahoe-Drop-In-Cast-Iron-Bathroom-Sink-in-White-with-Overflow-Drain-K-2890-4-0/100013920>

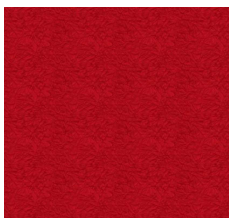
Bath Sink Faucet: <https://www.homedepot.com/p/Glacier-Bay-Dorind-4-in-Centerset-2-Handle-High-Arc-Bathroom-Faucet-in-Chrome-HD67110W-6001/313599888#overlay>

Toilet / Seat: <https://www.homedepot.com/p/KOHLER-Wellworth-Classic-Complete-Solution-2-Piece-1-28-GPF-Single-Flush-Round-Toilet-in-White-Seat-Included-K-11464-0/203231466>

Bathroom Shower Trim Kit: <https://www.wayfair.com/home-improvement/pdp/t17453-ss-cz-delta-vero-volume-control-tub-and-shower-faucet-trim-with-lever-handles-and-monitor-dlt6640.html>

Carpentry

- 1) Checked steel frame while floor was open. In good condition. No issues.
- 2) Replace sub floor with new 3/4" marine grade plywood. Stiffen up floor.
- 3) Install new 1/4" Baltic birch paneling on wall and ceiling. Install 1/8" baltic birch on curved ends.
- 4) Closet Doors. Replace all hinges and hardware.
- 5) Pocket Doors. Tested all and repair as needed to make operational.
- 6) Built in dressers. Test all drawers and adjust if possible to make easy to operate.
- 7) Cabinets
 - a. New drawers – Several drawers had to be replaced or rebuilt.
 - b. New cabinet door hardware: Rejuvenation: Mid-Century Peg Cabinet Knob. Brushed Chrome. Qty needed: 17
 - c. New cabinet drawer pull and front bedroom dresser: Rejuvenation Sharp Arch Drawer Pull. Brushed Chrome. Qty needed: 15 (doesn't include 8 drawers in BR2).
 - d. New closet door knob: Rejuvenation Qty Needed: 9
 - e. New hinges: AME-BPR342826 Amerock 3/8" Inset Face Frame Mount Self Closing Cabinet Hinge - PAIR (Polished Chrome) Qty Needed: 52 – Brushed chrome?
 - f. Built new bench seat with HW heater in it. L shaped bench.
 - g. Bathroom base cabinet. Built new sliding paneling doors.
 - h. Medicine cabinet no door. Added sliding mirrors.
- 8) Laminate
 - a. Countertops / Table – – Wilsonart Laminate Sheet in Red Cracked Ice with Virtual Design Gloss Finish
 - i. Kitchen: Install new countertops with sink cutout. Drop in stainless steel sink.
 - ii. Dining Table Size – 36" x 54"
 1. Have table base.
 - iii. Bathroom: Countertop and sink – Laminate
 - iv. BR1 – Built in dresser. Needs new top and edge.
 - v. Mudroom Shelf
 - vi. BR2 – Makeup shelf
 - vii. Details
 1. Edge Profile for metal - Aluminum Tee Edging – 3/4" Smooth Face x 5/8" Leg
 - b. Backsplash – Wilsonart Laminate – Color: Quince with Virtual Design Matte Finish
 - i. Kitchen: Behind sink and gas range. Window cut out over sink. About 18" tall.
 - ii. Bath: Behind sink on wall and side wall. About 20" tall.
 - iii. Details
 1. Cove or intersection between countertops and backsplash





Link to Cabinet Door Knob Hardware: <https://www.rejuvenation.com/catalog/collections/mid-century-peg-cabinet-knob/products/5859c57001925bf76d0084dc>

Link to Cabinet Drawer Pull Hardware: <https://www.rejuvenation.com/catalog/collections/square-cabinet-knob-with-round-backplate>

Link to Cabinet Hinges: https://www.thehardwarehut.com/cabinet_hinges-inset-lipped.php?d18=110&finish=83

Link to Laminate: <https://www.homedepot.com/p/Wilsonart-4-ft-x-8-ft-Laminate-Sheet-in-Red-Cracked-Ice-with-Virtual-Design-Gloss-Finish-Y0537K13724896/306588407>

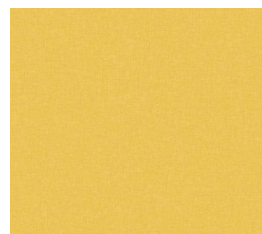
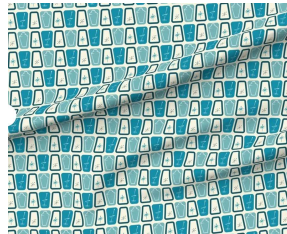
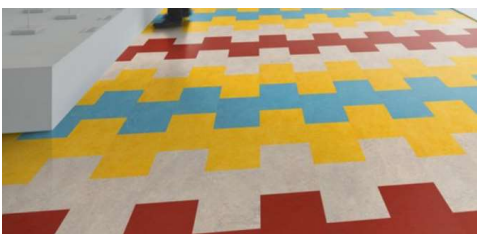
Link to Countertop and Table Edge Profile: <https://eagle-aluminum.com/product/aluminum-tee-hatchcover-34-smooth-face/>

Link to Table Base: <https://www.cabinetparts.com/p/peter-meier-furniture-components-table-bases-PMI602028AL-p33734>

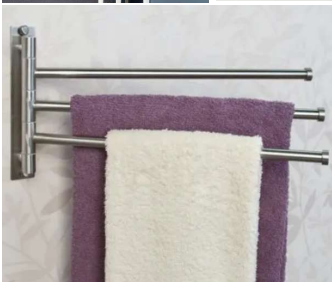
Interior Finishes

- 1) Floor covering. Install new Marmoleum 25cm x 50 cm tiles in four color half drop pattern. Colors: t3238 Modular Laguna, t3251 modular lemon zest, t2713 modular calico, t3352 Modular berlin red.
- 2) Kitchen Backsplash. [Wilsonart 4 ft. x 8 ft. Laminate Sheet in Quince with Virtual Design Matte Finish-Y0346603724896 - The Home Depot](#)
- 3) Bath surround - Fibo 5 Panel Laminate Shower Surround. OAMT-LB-0000 Lake Blue
- 4) Shower rod details. Moen Satin Stainless Shower Rod from the Donner Commercial Collection Model: CSI58-5 from the [Donner Commercial Collection](#)
- 5) Kitchen towel rack: Towel Bar, 18 In., Clearwater Bathroom Hardware Set Product #: 10203 | Finish: Satin Nickel
- 6) Bath towel bar 24" Towel Bar, 24 In., Clearwater Bathroom Hardware Set Product #: 10204 | Finish: Satin Nickel. Qty 2 (bath and BR2 door)
- 7) Bath towel ring Towel Ring, Clearwater Bathroom Hardware Set Product #: 10205 | Finish: Satin Nickel
- 8) Bath towel swinging arm for niche where furnace was located. Add details. Signature Hardware 13-3/4" Brass Towel Rack - Triple Swing Arm Model: 297316 Qty: 2.
- 9) Staining and Refinishing of existing cabinet boxes and paneling as needed. Clean up and remove grime. Sand. Finish with natural finish. No stain.
- 10) Painting – Wall paint.
 - a. Kitchen & BR2: SW 7012 Creamy – Semi gloss satin finish
 - b. Bath Surround: 5 panel Fibo wall kit. Color: Lake Blue
- 11) Curtain rods –
 - a. [Achim](#) Innovative 36-in to 66-in Brushed Nickel Steel Single Curtain Rod Item #1943698 Model #INODYL3604. Qty needed: 4 (BR1 – Side windows x2, BR2 – Single Window, BR2 – Double Window)
 - b. BR1 – Front Windows – 8' wide. Curved.
 - c. BR1 & BR2 – Privacy Door -24" wide. Wall mount and swinging. Urbanest Set of 2 Swing Arm Rods, 3/4-inch Diameter, 24-inch to 38-inch, Brushed Steel
 - d. BR2 – Door window (see towel bar above)

- e. Privacy curtain holder swing arms doors to bedrooms – Fabric. Achim Home Furnishings INOBRNNK04 , Nickel Innovative Swing Arm Rod, 20"-36"
- 12) Shower Curtain: Twinkling Starbursts Mid Century Modern Pattern in Light Mustard Yellow and White Shower Curtain by Kierkegaard Design Studio
- 13) Window Coverings – Mid-Century Blue Abstract Fabric - Blue Starbursts And Shakers By Roofdog Designs - Mid-Century Cotton Fabric By The Yard With Spoonflower
- 14) Inside Door Covers: Vanilla Champion Diamond Quilted Faux Leather Vinyl foam backed fabric Automotive headliner headboard upholstery 54" Wide
- 15) Mirrors - (1/8" Clear Mirror. Pencil Ground (rounded matte finished edge), need clips)
 - a. Front Bedroom 26" w x 40" t
 - b. Bathroom Wall Mirror over toilet 19" w x 40" t Bathroom medicine cabinet sliding doors – qty 2 18 1/4" tall x 18" wide
 - c. Back bedroom on sliding door 19" w x 60" t
 - d. Back bedroom over makeup counter 36" w x 40" t
- 16) Glass for broken top vent window. 5 1/8" x 17 3/8" Glass has an etched privacy pattern. 1/8" thick glass.



SW 7012
Creamy
Interior / Exterior
Location Number: 261-C3



SW 7012
Creamy
Interior / Exterior
Location Number: 261-C3

Link to Backsplash Laminate: [Wilsonart 4 ft. x 8 ft. Laminate Sheet in Quince with Virtual Design Matte Finish-Y0346603724896 - The Home Depot –](#)

Link to shower rod: Moen Satin Stainless Shower Rod from the Donner Commercial Collection Model: CSI58-5 from the [Donner Commercial Collection](#)

Link to Shower Curtain: https://society6.com/product/twinkling-starbursts-mid-century-modern-pattern-in-light-mustard-yellow-and-white_shower-curtain?

Link to kitchen towel drying rack 18": <https://www.harneyhardware.com/products/towel-bar-18-in-clearwater-bathroom-hardware-set-satin-nickel-10203>

Link to bath towel bar 24": <https://www.harneyhardware.com/products/towel-bar-24-in-clearwater-bathroom-hardware-set-satin-nickel-10204>

Link to bath towel ring: <https://www.harneyhardware.com/products/towel-ring-clearwater-bathroom-hardware-set-satin-nickel-10205>

Link to Towel drying arm: <https://www.build.com/product/summary/1728912>

Link to curtain rods:

- a) 24" : <https://www.amazon.com/Achim-Home-Furnishings-Innovative-Nickel/dp/B01H1S7FAG>
- b) 36" – 66" <https://www.lowes.com/pd/Achim-Innovative-36-in-to-66-in-Brushed-Nickel-Steel-Single-Curtain-Rod/1001803598>

Link to Fabric for Window Curtains and 28" wide privacy curtain fabric for doors to bedrooms:

<https://www.etsy.com/listing/697239241/mid-century-blue-abstract-fabric-blue>

Link to Fabric for Exterior Door coverings: <https://www.etsy.com/listing/959309676/vanilla-champion-diamond-quilted-faux>

Furnishings

- 1) Appliances – Stainless steel.
 - a. Cabinet Depth Refrigerator - Galanz 12.0 cu. ft. Top Freezer Retro Refrigerator with Dual Door True Freezer, Frost Free in Red
 - b. Gas range – Galanz 24 in. 2.7 cu. ft. Gas Range in Stainless Steel with Oven
 - c. Hood Vent - AKDY 24 in. 58 CFM Convertible Under Cabinet Range Hood in Brushed Stainless Steel with 2 Carbon Filters and Push Button
- 2) Table – Custom to match countertops. See carpentry specs.



Link to range: <https://www.warnersstellian.com/product/11003/frigidaire-fcrg3052as>

Link to refrigerator: <https://www.warnersstellian.com/product/10001/frigidaire-fftr1821ts>

Link to hood vent: <https://www.homedepot.com/p/AKDY-24-in-58-CFM-Convertible-Under-Cabinet-Range-Hood-in-Brushed-Stainless-Steel-with-2-Carbon-Filters-and-Push-Button-RH0333CFL/318273031>